

FOCUS

NORTH + AMERICA

2020-21 ANNUAL REPORT



Facing The Needs Of Our Neighbors, Together



ON THE INSIDE

Letter from the Executive Director	3
Our Mission in Action	4
Engaging Orthodox Parishes in Outreach	6
New Faces of FOCUS	7
YES: Strengthening Communities	8
Facing the Needs of a Neighbor	10
Letter from the Board President	10
Thank You to Our Partners	11
Consolidated Financials	12
FOCUS Board of Directors & Advisors	14
Want to Solve Poverty? Build Connections	15

On the cover: From coast to coast, FOCUS is made possible by the hard work of dedicated volunteers. Thank you to everyone who shared their time, talents, and treasures this year, helping our mission come to life in so many communities across the country!

FOCUS North America is registered under section 501(c)(3) of the Internal Revenue Code; EIN 26-4427803

Dear Friends,

Glory to Jesus Christ! As I greet you this year, I feel an overwhelming sense of gratitude for your commitment to carrying out Christ's call to serve in your local communities in 2020, a challenging year for us all. Responding to Christ's call to serve and connect are at the heart of our mission at FOCUS. Since our founding, we are continually blessed to network with Orthodox Christians and engage people across the country who share compassion and love with their neighbors in need - right in their own backyard.

At FOCUS, we understand that poverty stems from disconnection - both from God and from each other. When we are committed to recognizing and nurturing our connection with God, and asking him to reveal our connections with each other, we are better equipped to meet our neighbors where they are and provide for their immediate needs. Due to the unprecedented impact of COVID upon society and our own communities of servant leaders, it is more important than ever to intentionally seek to connect with others - especially our neighbors experiencing poverty.

Some aspects of our ministry changed due to COVID (sit-down community meals were shared "to-go" style, for example). Nevertheless, I am thankful to report FOCUS continuously served the needs of our neighbors safely and effectively throughout 2020. Some of this year's highlights, even in the midst of the pandemic, include distributing over 1.7 million pounds of food to the hungry, 18,430 items of PPE to Clergy and first responders, and providing over 11 thousand nights of shelter to homeless men.

In the spirit of togetherness, the Fellowship of Orthodox Christians United to Serve continues to provide opportunities to serve meals, share clothing and provide household items to people in need every day. Looking forward, we are also excited to offer job training to at-risk men in Western Pennsylvania; strengthen bonds of kinship across diverging communities in Detroit, MI; and re-engage Orthodox communities with a renewed sense of care to those marginalized in St. Louis, MO. Through all of these opportunities, we hope to share with those who serve an opportunity to become closer to Christ and to each other in this world - a world where everyone experiences and shares the transformative love of Christ.

Thank you for another year of generous prayers and support.

In Christ,

Mr. Kenneth Kidd
Executive Director



Connecting with those
who have become disconnected

Our Mission in Action

FOCUS North America engages people in Christ's Call to serve by providing opportunities and resources designed to support communities in need.

Through the support of our generous donors and benefactors in 2020, FOCUS received cash donations in excess of \$2.2 million. Along with these gifts, we were able to invest an additional \$3.3 million worth of donated food, clothing, household products and services back to the communities we serve. Maximizing the power of every gift, we met our neighbors in need by:

PROVIDING

11,680 nights of shelter for homeless men (this includes transitional housing)

75 hours of online Orthodox youth servant leadership formation programs

SERVING

66,610 prepared meals to our neighbors

200+ young people in need of community during the pandemic

DISTRIBUTING

38,025 articles of clothing to the naked

238,635 dollars worth of household goods and hygiene products to the underserved

1,702,702 pounds of food to the hungry

2,552 back to school backpacks to homeless and highly mobile children

18,430 items of PPE to clergy and COVID first responders underserved

2020 Donor Community Snapshots

In 2020, 730 people joined our community as first-time donors.

Welcome First Time Donors

579 in 2019 **730** in 2020

As a community based organization with over 2,500 individual donors, we never lose sight of the people who make what we do possible.

Focus Donors by %

80.1% Individual	3.3% Clergy
5.5% Other	2.4% Church/Religious Organization
4.1% YES Student	0.7%
3.9% Church	

Engaging Orthodox Parishes In Outreach During COVID

FOCUS SoCal Drive-Through Food Distributions

Before COVID, 1 out of 8 Californians did not know where their next meal was coming from, and 4.6 million Californians faced food insecurity, 1.7 million being children. At the beginning of the pandemic in March 2020, the OC Food Bank lost over 500 corporate volunteers who packed senior citizen food boxes. FOCUS Southern California was there to respond to the needs of its neighbors. Every week, almost 40-50 FOCUS volunteers stepped up and began packing the food boxes so that the OC Food Bank could distribute 30,000 boxes of food to seniors in need every month. COVID did not stop our FOCUS volunteers who wanted to serve others.

In April of 2020, FOCUS was one of many nonprofits who participated in an Emergency Food Drive-Through Distribution program. After participating in these food distributions, FOCUS Southern California Director, Irene Basdakakis, knew the need for food would continue throughout 2020, and that Orthodox Christian communities could help meet this need. FOCUS began hosting its own large food distributions in the parking lots of two Orthodox Christian parishes and a Christian school where there was a substantial need for food. FOCUS also began distributing clothing, household goods and personal items in 2020 and continues to do so in 2021.

"We are so thankful for the financial support and the volunteer hours that so many have generously given to FOCUS Southern California," said Irene Basdakakis. "We could not have accomplished all that we did without the support of our community and nonprofit partners."

COVID hit during a time when FOCUS was re-establishing its ministries in Southern California. While others may have waited out the storm, FOCUS Southern California created meaningful opportunities for the Orthodox faithful and the local communities to serve. Now, with over 8,000 volunteer hours logged, the FOCUS community in Southern California continues to innovate and provide needed resources and services to the community.



Kathy Bastas
SoCal Volunteer

"Without love, passion, dedication, and financial support at all levels from staff, volunteers and donors, FOCUS would not be able to make the impact it does in so many people's lives.

Over the years, I saw firsthand the amazing work FOCUS was doing with their hands-on events

New Faces of FOCUS

This year, FOCUS was fortunate to welcome three new, talented staff members to our community. Here's what each of them have to say about working at FOCUS



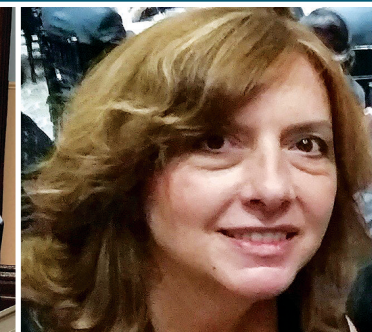
David Smeltzer, CFO
National

"I am honored to have joined the FOCUS North America family and to be a small part of the good work they do to serve others in the name of Jesus Christ. With over 30 years of not-for-profit management experience, I look forward to working with the dedicated team of staff and volunteers at FOCUS as we seek to expand our impact on the communities and individuals we serve."



Mary Ellen Jordan,
Social Worker
Cleveland

"Working with the residents of St. Herman House as well as the greater community has truly been a gift for me. My goal is to make sure that everyone I interact with at St Herman's feels that they have been seen and heard. It might seem simple, but meeting folks where they're at and taking the time to listen to what they have to say feels like the most important part of my job."



Bessy Ferrell,
Administrative Assistant
Southern California

"FOCUS gives me the opportunity to have an outlet to live my faith in a practical manner. I am excited about the opportunity to put my education and passion towards an organization that is strongly based on the principles of my faith with a practical expression towards helping others."

providing food, housing, clothing, diapers, summer lunches for kids, backpacks to help with the first day of school, an opportunity to talk & listen, and most recently with the overwhelming success of several food drives providing immediate nourishment to so many families during the pandemic. This is the primary reason why my husband and I became donors; we saw that our donations are truly used to support the needs of those living within our Southern California community.

As a recently retired individual, I am able to happily expand my involvement with Southern California FOCUS not only as a donor, but as a weekly volunteer. I witness the effects that come from dedicated staff working directly with outstanding community partners to feed the hungry. A day does not go by without a heartfelt Thank You and God Bless You. The various agencies that FOCUS partners with reach way beyond the Center. My own heart swells to be part of FOCUS, a wonderful organization."



Strengthening Communities

YES offers participants opportunities to grow closer to Christ and each other.

The work of Youth Equipped to Serve (YES) seeks to meet several needs that youth and young adults experience today. They are faced with a deep need for human connection, now more than ever. Through YES, youth and young adults experience the Church contextualized through service, which brings to life our rich liturgical traditions. YES aims to provide experiences that reveal what it means to know and serve God and to be trusted by him to do His will in the world. Young people need a space where, without judgment, they can process the world around them and discover the role they play in sharing the love of Christ with others. YES provides that space.

Ellie and Sarah were paired through the MNTR program, which is one of the opportunities that YES offers to its participants. Get to know how their YES experiences have shaped their understanding of Christ's call to serve.

Ellie *YES Supporter*

“One of the most important things for someone to know about YES is that this is a community that does unconditional love, mercy, and compassion SO well. I feel loved and welcomed exactly as I am, and I know that this is also felt by others participating as well as those we serve. After each YES event, I'm filled with so much strength, love, and inspiration to be an authentic servant in every moment of my life. I also feel encouraged to take care of my own needs so that I can sustain this attitude of service. I'm so grateful for the space YES provides to learn together, grow together, be vulnerable with one another, and get to know Christ and one another on a deeper level!”



Sarah *YES Supporter*

“Youth and young adults who seek out (or inadvertently find) YES are ready for thoughtful engagement with poverty, hands-on service learning opportunities, and an outlet to participate in the kingdom of heaven. It is a blessing to be a part of a strong community where I am welcomed as I am, and can pass on my knowledge to encourage new and continuing participants to grow in their faith through meaningful devotion to God through their neighbor. I am happiest when I am supporting YES through the giving of my time, my talents, and even my resources as a YES sower. YES helped me during my formative years to define who my neighbor is, what the difference is between fixing, helping, and serving is, and what Godly love looks like in action. YES allowed me to see that God's will is simply for us to love with no conditions, no limits, no if's or but's, but with overwhelming acceptance, understanding, and compassion.”

YES + MNTR

In 2020, Youth Equipped to Serve (YES) began working with Orthodox Christian Leadership Initiative (OCLI) to create and pilot a needful and formative program called MNTR: Mentoring and Nurturing Transformative Relationships. In June of 2021, members of the YES community participated in the first step of MNTR, an interactive and vibrant workshop that sets the tone for a year of building mentoring relationships. Through MNTR, YES participants were matched in pairs or triplets that will provide another layer of support as they grow in their personal, spiritual, and servant leadership development. During a time of uncertainty and disconnection, we are so thankful the YES community has had countless opportunities to grow closer to Christ and each other.

Holly Benton, *OCLI Executive Director*

“The Orthodox Christian Leadership Initiative is a national initiative to increase generosity, servant leadership, and social outreach by clergy and laity of all jurisdictions working together nationally, regionally, and locally. This includes our emerging leaders like those cultivated through Youth Equipped to Serve. MNTR creates opportunities for people to realize their unique place in the body of Christ, integrated through collaborative multi-generational ministry. The program is designed for parishes, schools, or other Christian organizations to engage their seasoned and emerging leaders in collaborative work and ministry which will strengthen clarity of purpose, vision, and succession planning for those communities and help all individual participants to fulfill God's call to serve. We are so grateful to launch MNTR with YES, a blessed and intentional mentoring community that will help us improve the program as we pray for God's direction in scaling to our parishes, schools, and college campuses.”

Facing the Needs of a Neighbor

Terry came to St. Herman House in the fall of 2020 after being evicted from his apartment. He suffers from a diagnosed mental illness and has not worked since he was a teenager. With the limited income he receives from disability, he rented an apartment and lived on his own for many years. During the pandemic he was unable to see any of his doctors and slipped into a depression. He was no longer able to manage his apartment and was eventually evicted. A partner agency referred him to St. Herman House. After moving into St. Herman's, Terry was able to reconnect with his doctors and resume his medications. He participated in the weekly bible study, attended daily prayers and began helping with the chores around the house. St. Herman House Case Manager, Mary Ellen, helped him apply to a subsidized apartment building for seniors in downtown Cleveland. With the help of the St. Herman community, Terry was able to furnish his apartment with donations and stock his cupboard with food. There were still obstacles though. Because of his mental illness, keeping a clean and organized apartment is very difficult for him. Building management threatened to evict him if the situation didn't improve. St. Herman House staff found a creative solution: Terry pays a small fee to a former St. Herman resident to help clean his apartment each week. Terry moved out more than 6 months ago and continues to visit St. Herman House almost daily, where he volunteers by answering the phone and greeting those who come seeking help. When he walks through the front door, you will often hear the other residents shout "Hey, Terry! It's my man Terry!" He wears a beaming smile, which says it all about St. Herman's impact on his life. *Name has been changed to protect client's privacy.*

Every Gift is an Opportunity to Connect

On behalf of the FOCUS North America Board of Directors, I extend my sincere thanks for your unwavering dedication to our mission: engaging people in Christ's call to serve. The impact of Orthodox Christian service in the United States is growing. As our fellowship of volunteers, leaders, donors, servants and staff grows, we are committed to providing opportunities and resources for you to connect with and serve your neighbors in need.

At FOCUS, we see every gift as an opportunity to build connections within communities, connections that reveal Christ's love and inspire meaningful service. The following financial overview is a testament to the commitment and benevolence of our community of givers.

Thank you for choosing FOCUS to be part of your almsgiving.

In Christ,



Mr. Brian Bullard



The work of FOCUS communities across the country is made possible in part by our valuable partners. Thank you to all of the businesses, foundations, nonprofits, and faith-based organizations that worked alongside FOCUS in 2020, especially:

Abound Food Care, CA
American Hellenic Education Progressive Association, CA
Capital Group, CA
Cleveland Foundation, OH
Community West Foundation, OH
Fairview University of Minnesota Bethesda Clinic, MN
Giving Children Hope, CA
Greater Cleveland Council of Orthodox Clergy, OH
Grocery Guidelines - The Assembly of Canonical Orthodox Bishops, Greek
Orthodox Archdiocese, Orthodox Christian Fellowship
Keystone Community Services, MN
May Dugan Center, OH
Minnesota Eastern Orthodox Clergy Association, MN
Orange County Diaper Bank, CA
Orange County Food Bank, CA
Orthodox Vision Foundation
Philoptochos Metropolis of San Francisco, CA
Project Reach - St. Paul Public Schools, MN
Renovation Angel, NJ
Restoration Counseling and Community Services, MN
SRFC - Ramsey County Human Services, MN
St. Vincent de Paul Society Twin Cities, MN
Vibrant Emotional Health, NY
We Help, Inc, CA

V. Rev. Paul Hodge, MEOCCA President

"I want to say from my heart what a treasure the FOCUS Minnesota ministry has been for our MEOCCA clergy association. Not only do we get to hold up your work as an example of caring for the "least of these" when we are teaching the Gospel to our communities, but thanks to FOCUS we ourselves can roll up our sleeves and care for them, too! Your generosity towards us priests and deacons, as toward the urban poor whom you serve, is also greatly appreciated. We love it when we can come help stock the shelves or prepare bags of goods for those in need – only to have you and your volunteers in your hospitality feed US, as well! You contribute to the lightening of our pastoral work, and we humbly thank you. *May the work of your hands be blessed and may this important ministry be sustained for many years!*"

Thank You to Our Partners

Consolidated Financials

Statement of Financial Position

ASSETS	2020	2019
Cash and cash equivalents	\$1,315,402	\$757,917
Accounts receivable	\$2,011	\$3,337
Pledges receivable	\$85,965	\$68,936
Other assets	\$36,630	\$37,405
Assets of discontinued operations	\$ -	\$14,380
Property & equipment, net	\$970,145	\$966,698
TOTAL ASSETS	\$2,410,153	\$1,848,673
LIABILITIES AND NET ASSETS		
Accounts payable	\$ -	\$22,795
Accrued liabilities	\$163,582	\$40,423
Liabilities of discontinued operations	\$ -	\$13,122
PPP loan payable	\$186,800	\$ -
TOTAL LIABILITIES	\$350,382	\$76,340
NET ASSETS		
Without Donor Restrictions	\$1,670,541	\$1,582,431
With Donor Restrictions	\$389,230	\$189,902
TOTAL NET ASSETS	\$2,059,771	\$1,772,333
TOTAL LIABILITIES AND NET ASSETS	\$2,410,153	\$1,848,673

Statement of Activities

REVENUES	Unrestricted	Restricted	Total
Contributions-operating	\$1,629,573	\$120,302	\$1,749,875
Grants	\$88,476	\$200,000	\$288,476
In-kind contributions	\$3,386,484	-	\$3,386,484
Registration fees	\$6,052	-	\$6,052
Event income	\$112,067	-	\$112,067
Program services income	\$44,371	-	\$44,371
Other income	\$18,494	-	\$18,494
Net assets released from restrictions	\$190,974	(\$190,974)	-
TOTAL REVENUES	\$5,476,491	\$129,328	\$5,605,819
EXPENSES			
Program services	\$4,700,700	-	\$4,700,700
Management and general	\$309,893	-	\$309,893
Fundraising	\$307,788	-	\$307,788
TOTAL EXPENSES	\$5,318,381	-	\$5,318,381
Loss on discontinued operations	-	-	-
Transfers between net assets	(\$70,000)	\$70,000	-
CHANGE IN NET ASSETS	\$88,110	\$199,902	\$287,438
NET ASSETS			
Beginning of Year	\$1,582,431	\$189,902	\$1,772,333
END OF YEAR	\$1,670,541	\$389,230	\$2,059,771



BOARD OF DIRECTORS

Mr. Brian Bullard [Chairman]
The Capital Group Companies, Inc.

Dn. Justin Bosl
Kazan McClain Satterley & Greenwood

Mr. Andrew Geleris
Magan Medical Clinic, Part of Optum

Dr. Maria Misthos
Medical Director

Mr. Eric Paljug, PhD
Joseph M. Katz Graduate School of Business, Univ. of Pittsburgh

Ms. Anna Vedouras
Cleveland Federal Executive Board

Mr. William Hoeft, Jr.
Ziegler Cat

Dr. Christine Hoeplinger
Ms. Lory Barsdate Easton
Sbdn. Richard Ajalat
Ms. Georgia Kazakis

HONORARY BOARD MEMBERS

Mr. Charles R. Ajalat [Founder]
Mr. William Hoeft, Sr.

ADVISORY BOARD MEMBERS

Ms. Maria Foscarinis
Mr. Brian Gerich
Mr. Peter Marudas
Ms. Frederica Mathewes-Green

Mr. Andrew Natsios
Mr. Joel Smith
Mrs. Theodora Polamalu

Want to Solve Poverty? Build Connections

In the United States, over 34 million people live in economic poverty and go without basic needs like clothing, food, and transportation every day. But did you know **this figure leaves out millions** more who are also experiencing plagues of loneliness, inadequate access to education, unsafe living environments, chronic health issues, and spiritual despondency.

Poverty is more than just a numbers issue. The need is often far greater than we'll ever see on the surface. Only through foraging connections and striving to recognize and serve Christ in our neighbor will we ever come close to addressing poverty in our country.



GIVE to FOCUS and commit to providing Orthodox Christians and communities with opportunities to connect with and stand beside their neighbors in times of need.

Thank you for your gift in support of FOCUS North America!

Card #

E-mail Address:

Exp. Date

3 digit code off back of card

Phone:

Name as it appears on card

Signature



Your gift is tax deductible to the fullest extent of the law. We will send you a receipt for your records. All of FOCUS' services are provided without discrimination of any kind. We never sell, rent or exchange our supporters' information.

NONPROFIT ORG
U S POSTAGE
PAID
KANSAS CITY, MO
PERMIT NO. 2344



Yes! I would like to make an impact in 2021!

Please accept my generous one-time gift: ☐ \${X1} ☐ \${X2} ☐ \${X3} ☐ \$_____

To send your credit card information by mail, please use the opposite side of this form.

Area of support:

- | | | |
|---|--|---|
| <input type="checkbox"/> Greatest Need | <input type="checkbox"/> St. Herman/Cleveland | <input type="checkbox"/> Detroit |
| <input type="checkbox"/> Gateway/St. Louis | <input type="checkbox"/> Minnesota | <input type="checkbox"/> Southern California |
| <input type="checkbox"/> West Central PA | <input type="checkbox"/> Backpack Program | <input type="checkbox"/> YES |

Consider making FOCUS part of your giving with a recurring gift of: ☐ \${X4} ☐ \$_____

I would like to make my recurring gift: ☐ **Weekly** ☐ **Monthly** ☐ **Yearly**

Make checks payable to FOCUS North America. Complete and mail this form to PO BOX 645039 Pittsburgh, PA 15264-5039

{DonorID} - 2021-07-AR